



Comparison of Nurse Faculty to Nurse Student Demographics

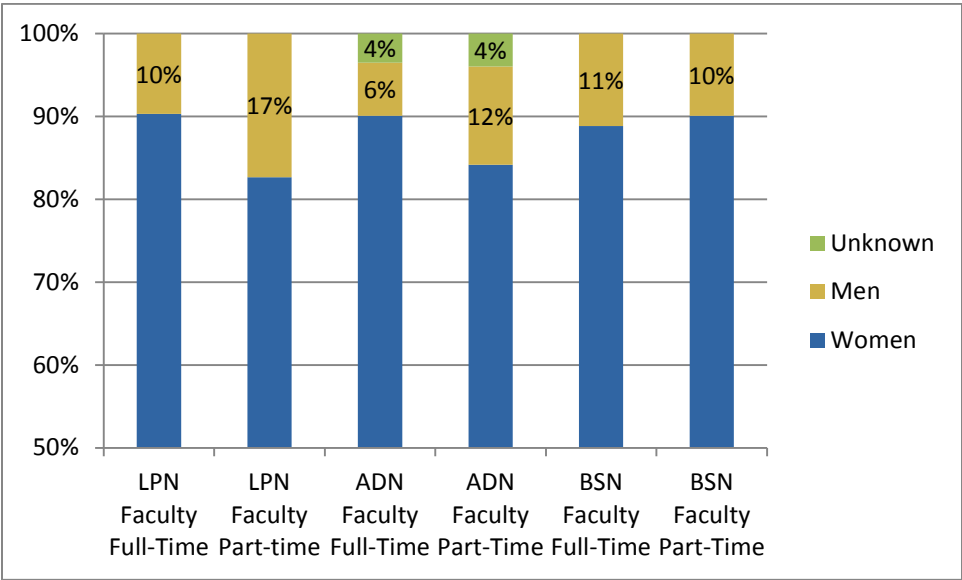
Based on Academic Year 2011-2012 Education Data

There is much discussion about the need for the nurse workforce to closely reflect the demographics of the population at large. Furthermore, a more diverse nurse faculty could result in greater diversity of nurse graduates. This brief report compares demographics of nursing school faculty to nursing school students among the education programs that responded to the Florida Center for Nursing Education Survey for Academic Year 2011-2012. We anticipate faculty demographics will change as older faculty (predominantly white, female) retire and as the nurse workforce becomes more diverse.

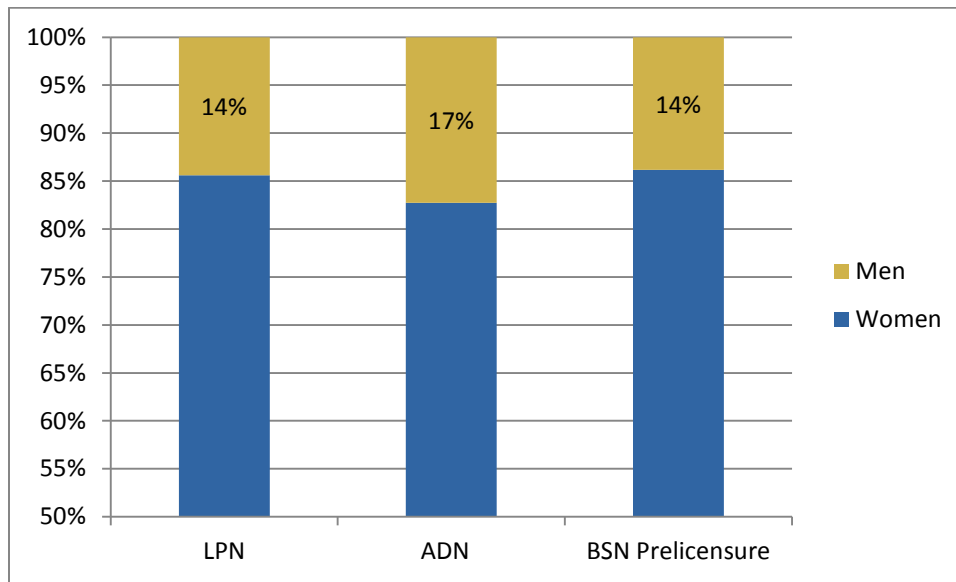
Gender

Generally, the proportion of men who are nursing students are larger than the proportion of men who are nursing faculty. Among full-time faculty, 10% of LPN faculty are men, as are 6% of ADN faculty and 11% of BSN faculty. Men represent a greater proportion of part-time faculty - 17% of part-time LPN faculty are men, and 12% of part-time ADN faculty are men. The proportion of male nursing students has remained about the same for the past few years. Fourteen percent of LPN and BSN students are men, and 17% of ADN students are men.

Faculty Gender



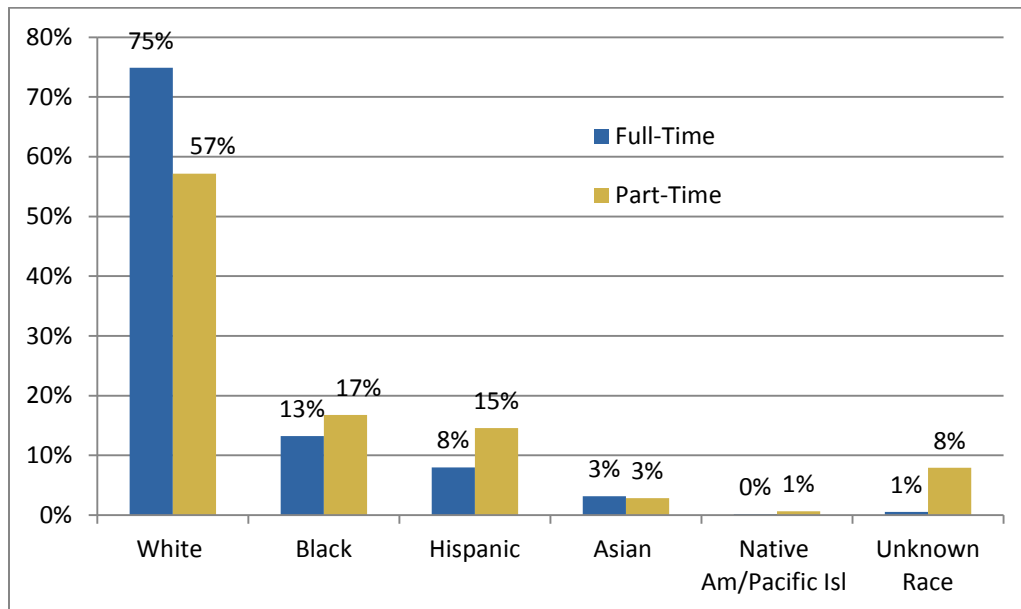
Student Gender



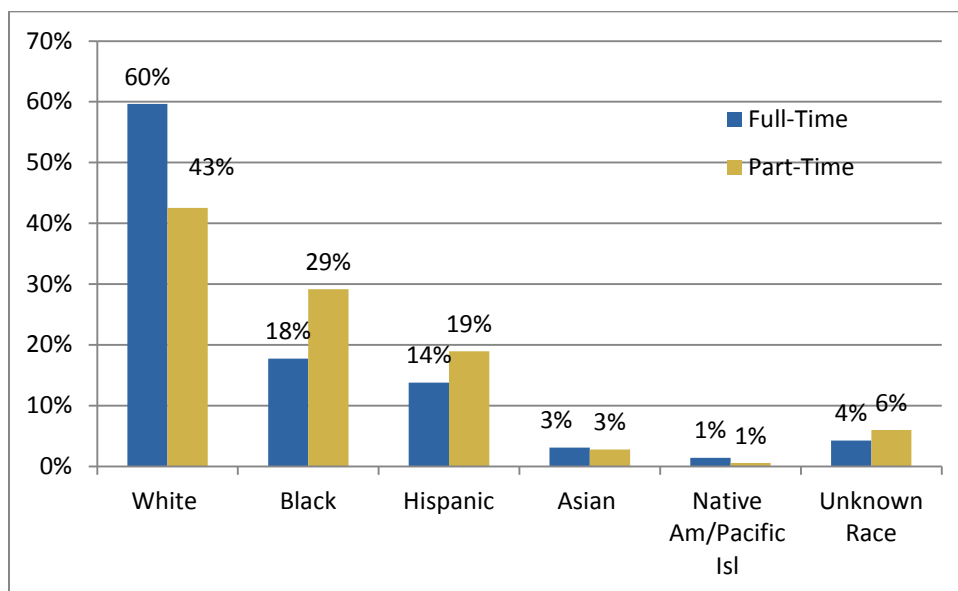
Race/Ethnicity

The following graphs show the race/ethnicity distribution of full-time and part-time faculty for BSN programs, ADN programs, and LPN programs. Within each type of program, the part-time faculty are more racially/ethnically diverse than the full-time faculty. For example, in BSN programs 60% of full-time faculty are White, 13% Black, and 8% Hispanic. But the part-time BSN faculty are 57% White, 17% Black, and 15% Hispanic. The students are also more racially/ethnically diverse than the faculty. 38% of students in ADN programs are White, 22% are Black, and 22% are Hispanic. (Note that 16% of the data for students in ADN programs are other/unknown race/ethnicity.)

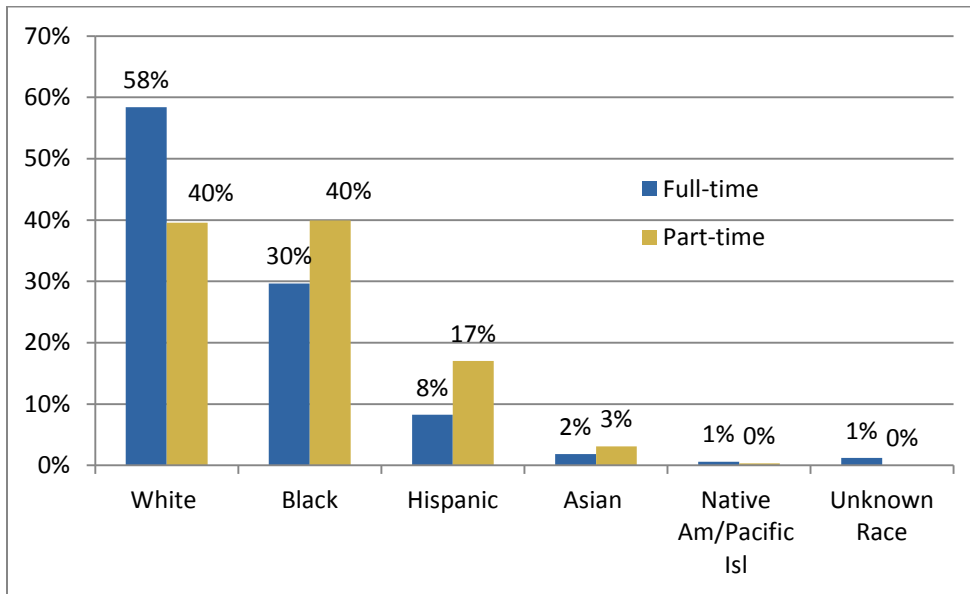
BSN (Pre-licensure) Faculty Race/Ethnicity



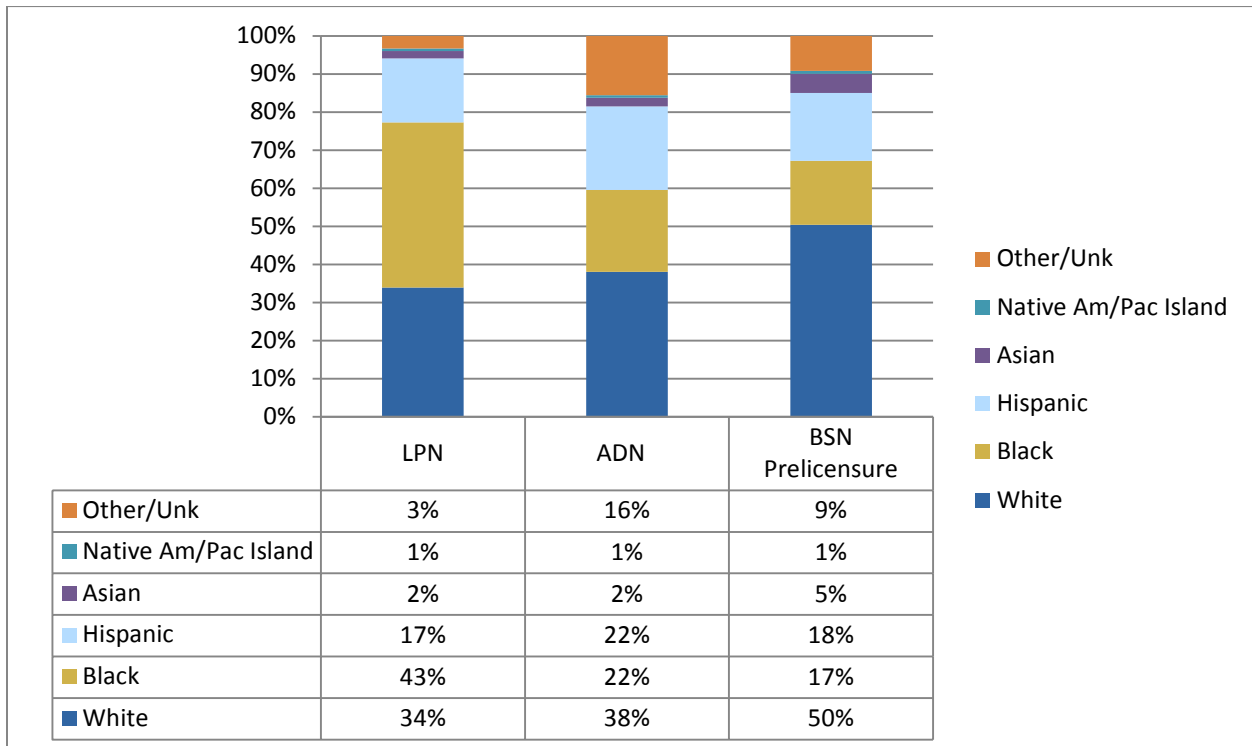
ADN Faculty Race/Ethnicity



LPN Faculty Race/Ethnicity



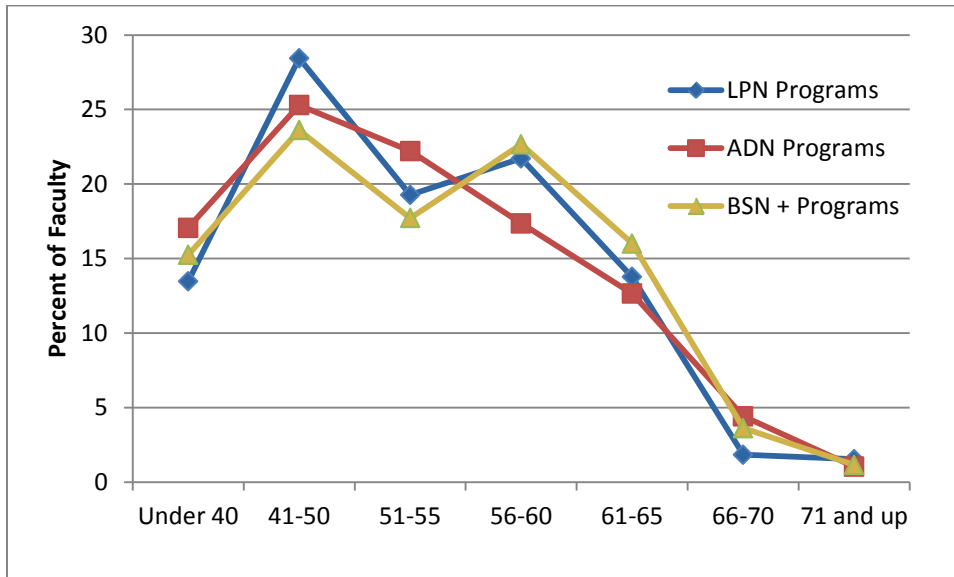
Nursing Students Race/Ethnicity



Age

As expected, there is wide variation between faculty and student ages. Only a handful of faculty are under age 30. A similar age pattern is seen in all types nursing programs, with the largest percentage of faculty between ages 41-50 (23% to 28%). About 58% of nursing school faculty are age 51 or older. The pattern of student ages varies by type of nursing program. BSN generic students are the youngest group, 18% are age 17-20 and 50% are age 21-25. 39% of BSN 2nd degree students are age 21-25, 25% are age 26-30, and 25% are age 31-40. 46% of LPN and ADN students are 21-30 years old.

Nursing Faculty Age Groups



Student Age Groups

